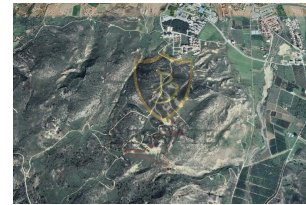
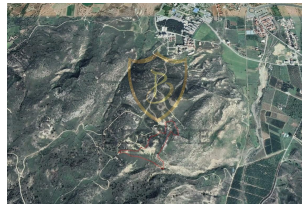
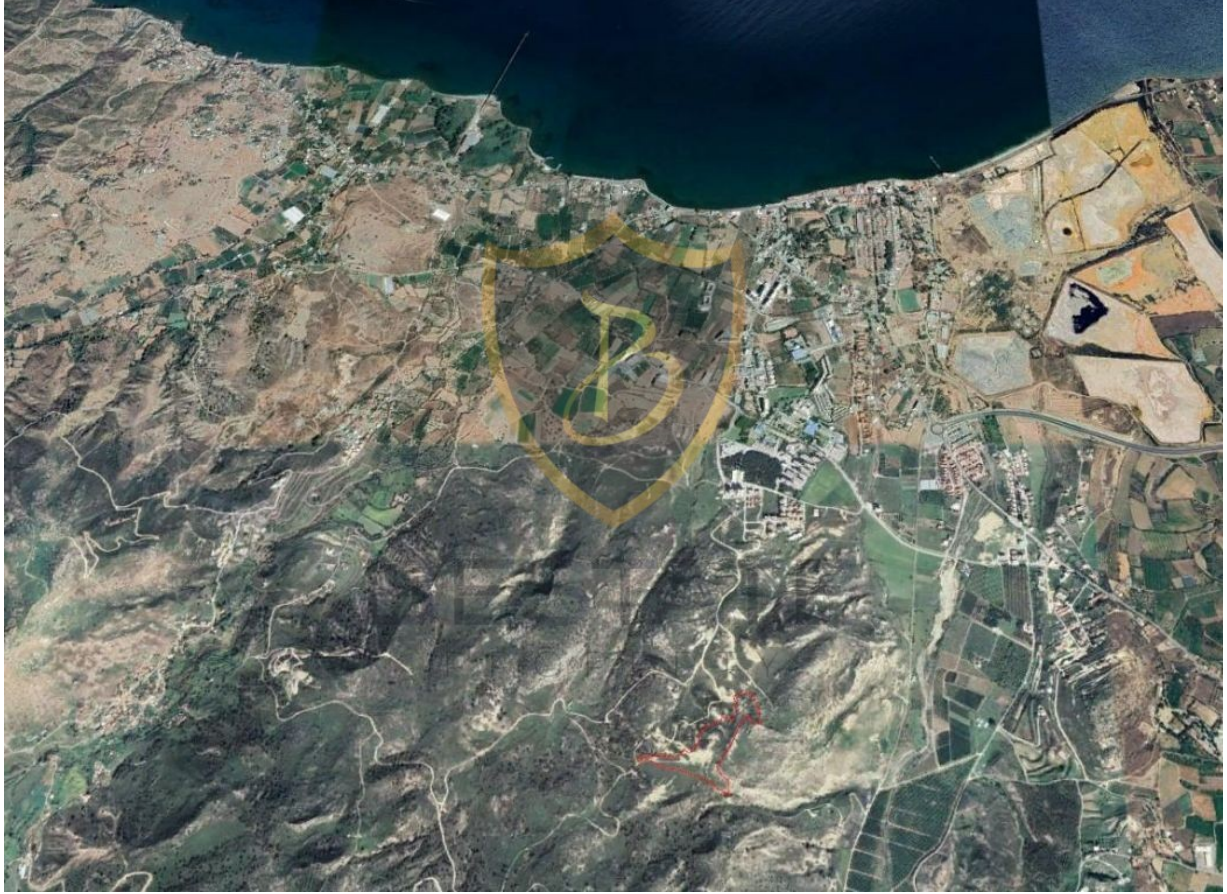


# BP-10000004436




Publication Date	<b>13-11-2024</b>	Max Floor Permission	<b>12</b>
Category	<b>Land</b>	Development Rate (%)	<b>220</b>
Status	<b>FOR SALE</b>	Title Deed	<b>Turkish Title Deeds</b>
Property Type	<b>Plot</b>	Payment type	<b>Total Price</b>
Net m <sup>2</sup>	<b>32 acre 2 square feet 2,980.52 Quarter of acre-</b>	Eligibility for Loan	<b>Appropriate</b>
Can Be Navigated By Video Call	<b>Yes</b>		

£ 22.000

TURKISH INVESTMENT FIELD WITH MOUNTAIN AND SEA VIEWS IN GÜZELYURT!!! (32 acres 3 houses)

- Stunning Mountain and Sea Views
- 3 min Driving Distance to European University of Lefke
- 5 min Driving Distance to City Center
- 43,762 m2 Field Area (32 Decares 3 Houses)
- 220% Zoning Rate
- 12 Floor Permission
- 96277 m2 Construction Area
- Turkish Cobbler

## İlan Danışmanları / Advisors / مشاور

	Full Name	MUHAMMET EMİN ÇAPAN
	GSM	905488801095
	Phone Number	905488801095
	E-mail	emin@bestateproperty.com